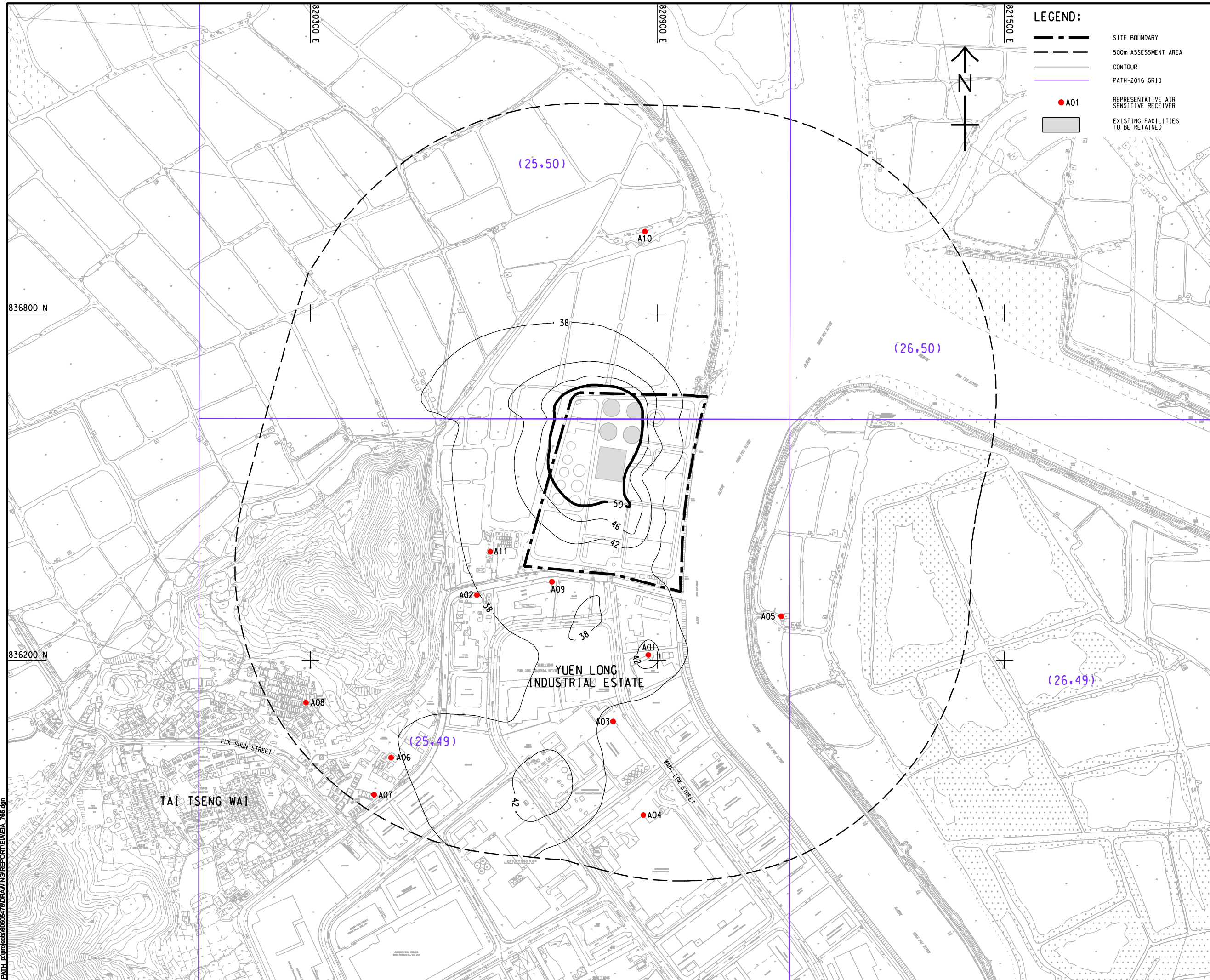


ISO A1 594mm x 841mm  
 Approved:  
 Checked:  
 Designer:  
 Project Management Initials:  
 836800 N  
 836200 N  
 22/2019  
 PLOT FILE BY: HEXY  
 PATH: F:\PROJECTS\6050476\DRAWING\REPORT\EIA\EA 785.dgn



**LEGEND:**

- SITE BOUNDARY
- 500m ASSESSMENT AREA
- CONTOUR
- PATH-2016 GRID
- A01 REPRESENTATIVE AIR SENSITIVE RECEIVER
- EXISTING FACILITIES TO BE RETAINED



**AECOM**

**PROJECT**  
 項目  
**YUEN LONG EFFLUENT POLISHING PLANT - INVESTIGATION, DESIGN AND CONSTRUCTION**

**CLIENT**  
 業主  
 渠務署  
 Drainage Services Department

**CONSULTANT**  
 工程顧問公司  
 AECOM Asia Company Ltd.  
 www.aecom.com

**SUB-CONSULTANTS**  
 分判工程顧問公司

**ISSUE/REVISION**  
 批註

NO.	DATE	DESCRIPTION	CHK.

**STATUS**  
 狀態

**SCALE**  
 比例  
 A1 1 : 3000

**DIMENSION UNIT**  
 尺寸單位  
 METRES

**KEY PLAN**  
 索引圖

**PROJECT NO.**  
 項目編號  
 60505476

**CONTRACT NO.**  
 合約編號  
 CE 3/2015 (DS)

**SHEET TITLE**  
 圖紙名稱  
 CONTOURS OF CUMULATIVE ANNUAL RSP CONCENTRATION (µg/m<sup>3</sup>) AT 1.5m ABOVE GROUND (YEAR 2026 – 2030)

**SHEET NUMBER**  
 圖紙編號  
 60505476/EIA/FIGURE 3.29

This drawing has been prepared for the use of AECOM's client. It may not be used, modified, reproduced or relied upon by third parties, except as agreed by AECOM or as required by law. AECOM accepts no responsibility, and denies any liability whatsoever, to any party, that uses or relies on this drawing without AECOM's express written consent. Do not scale this document. All measurements must be obtained from the master dimensions.